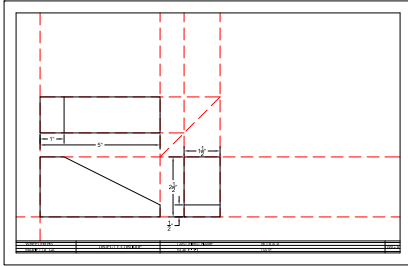
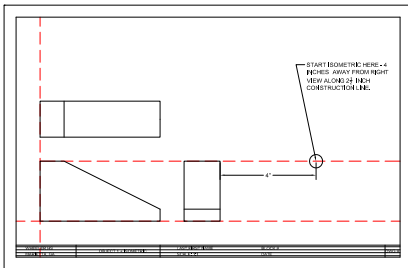


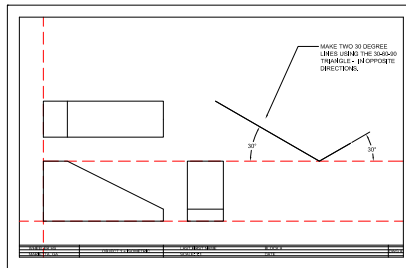
MAKE PICTORIAL - ISOMETRIC



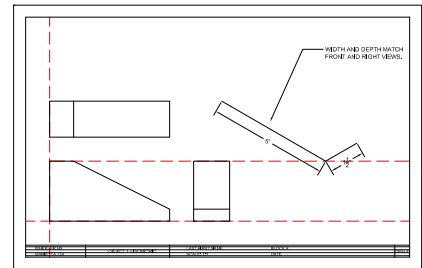
MAKE PICTORIAL - ISOMETRIC -1



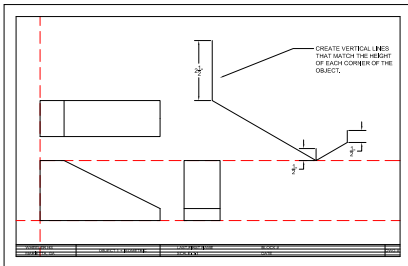
MAKE PICTORIAL - ISOMETRIC -2



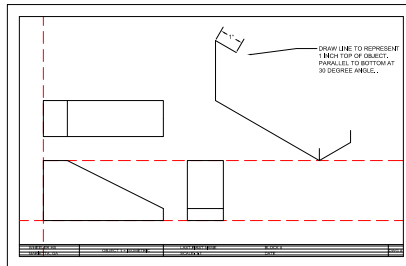
MAKE PICTORIAL - ISOMETRIC -3



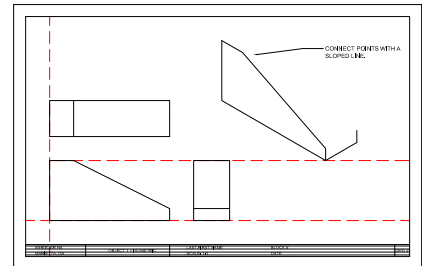
MAKE PICTORIAL - ISOMETRIC -4



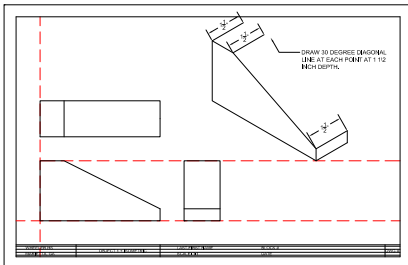
MAKE PICTORIAL - ISOMETRIC -5



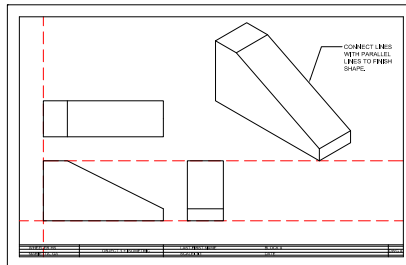
MAKE PICTORIAL - ISOMETRIC -6



MAKE PICTORIAL - ISOMETRIC -7



MAKE PICTORIAL - ISOMETRIC -8



Helpful steps in drawing an isometric pictorial of object 1.