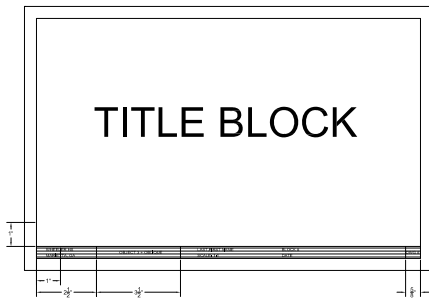
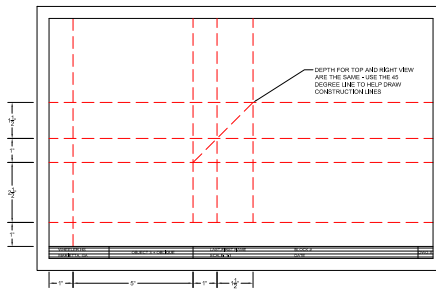


Intro. to Drafting

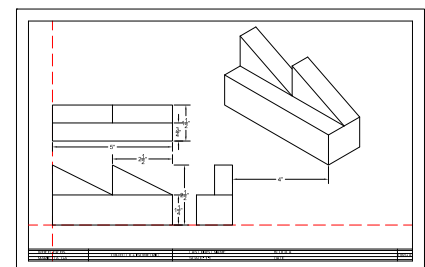
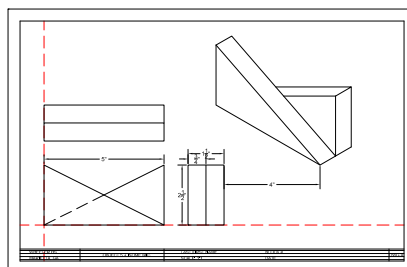
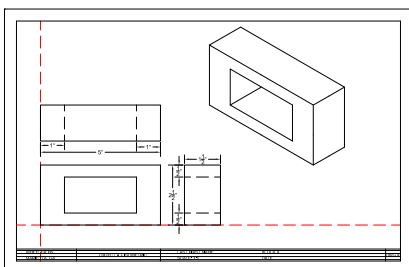
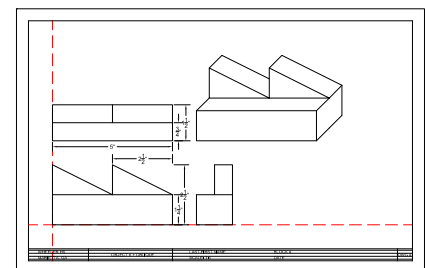
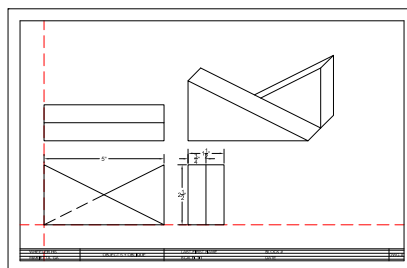
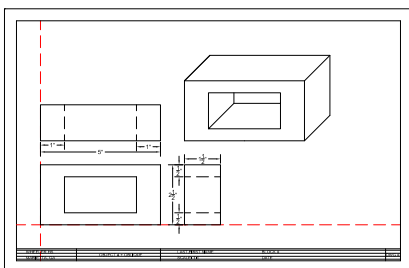
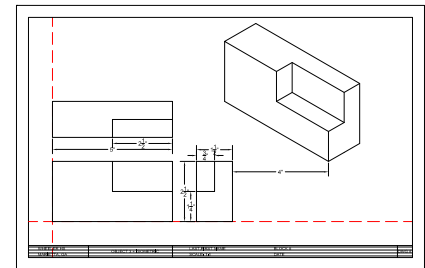
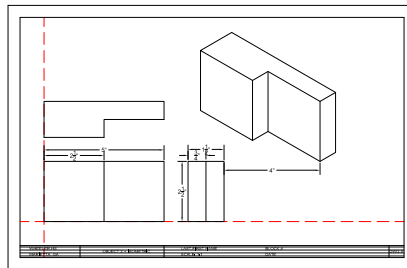
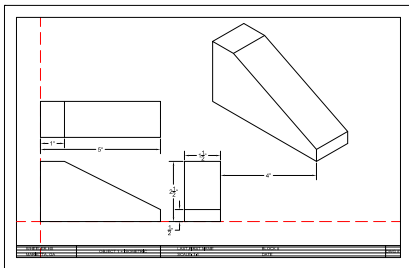
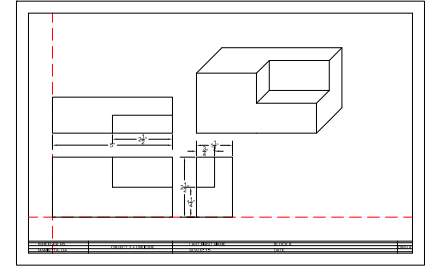
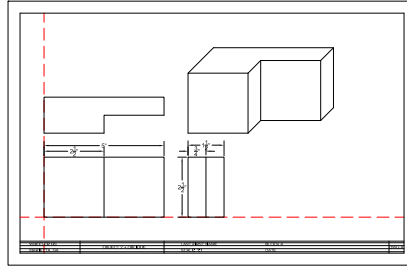
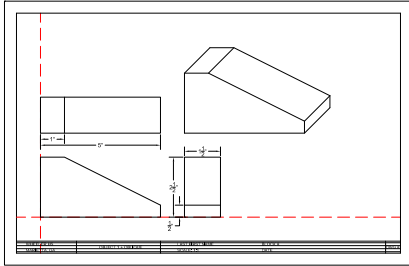
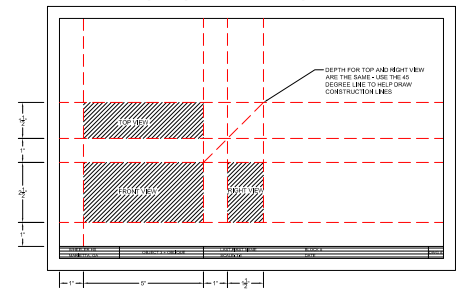
Drawing 5-8



MAKE CONSTRUCTION LINES



DRAW VIEWS IN SHADED AREAS



USE DRAFTING TOOLS TO COMPLETE THE VIEWS FROM THE HANDOUT AND CREATE A MULTI-VIEW DRAWING ON TYPE B PAPER (11 X 17). INCLUDE A PICTORIAL - OBLIQUE OR ISOMETRIC.